



ziehm imaging

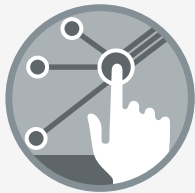
ZIEHM VISION RFD HYBRID EDITION CARDIO



UNIQUE 30 kW
GENERATOR POWER



SOPHISTICATED CARDIO
PACKAGES



INDIVIDUAL OPTION &
UPGRADE PACKAGES



REDUCE OVERALL COSTS
& INCREASE FINANCIAL
PERFORMANCE

Discover the groundbreaking alternative to fixed installed CathLab solutions

The Ziehm Vision RFD Hybrid Edition Cardio² is a mobile solution that offers all required qualities to instantly convert conventional ORs into a hybrid room or a mobile CathLab. Compared to a fixed installed system, it features a small footprint and inexpensive operating costs without the need for the planning and

construction phase in the OR. With a powerful 30 kW³ generator providing accurate 30 kW image quality for clinical interventions to complex cardiac or TAVI procedures, the Vision RFD Hybrid Edition Cardio delivers high quality X-ray images that were previously only possible with fixed room systems.

Ziehm Imaging
6280 Hazeltine National Dr | Orlando, FL 32822 | USA
Phone 800 503 4952 | Fax 321 445 5514
mail@ziehm.com | www.ziehm.com



Nationwide toll-free
SERVICE & TECHNICAL
PHONE SUPPORT

866.949.4346



© 2023 Ziehm Imaging, a division of Ziehm-Orthoscan, Inc. All Rights Reserved. Ziehm Imaging is constantly improving its products and reserves the right to change these specifications without notice. 113-0245 Rev. B 07/2023

ZIEHM VISION RFD HYBRID EDITION CARDIO



Enhanced imaging solutions with our premier partners

The combination of an industry-leading mobile C-arm with application specific supplements like EndoSize⁴ (case planning software), hemodynamic workstations, injectors as well as versatile viewing options instantly convert a mobile C-arm into an all-embracing imaging solution.

Mobile CathLab Solutions

Connectivity options for hemodynamic workstations by Fysicon⁵ or CathLab-ready monitors complete the mobile CathLab.



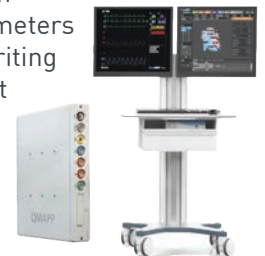
1 Ziehm Vision RFD Hybrid Edition Cardio CMOSLine 30kW

- Most powerful C-arm on the market
- Full motion control right at the physicians hands
- New optimized system settings for dedicated anatomical programs (APR) for high demanding applications in cardiology (Coro, EP)
- New "Cardio Tab" and a dedicated branding

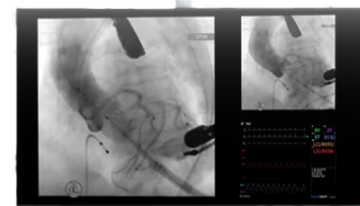
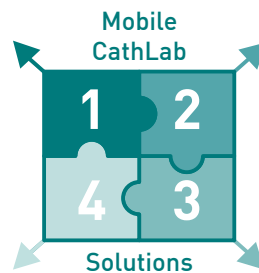


2 Fysicon: Mobile Hemodynamic System

- Continuous recording of the cardiovascular system
- Analysis of vital parameters
- Simplifies protocol writing
- Generates final report



4 Radiolucent table, e.g. Stille ImagiQ2



3 Ceiling Mounted Monitor

At a glance

Imaging technology	20.5 cm x 20.5 cm flat panel with 100 µm pixel size / 31 cm x 31 cm flat panel with 100 µm pixel size
Detector resolution (FD)	2 k x 2 k / 3 k x 3 k
Power generator	30kW, pulsed monoblock generator
Ziehm Usability Concept ⁶	✓
SmartDose Concept ⁷	✓
Advanced Active Cooling (AAC)	✓
Orbital movement	165 degrees
Motorization	Full control of the 4 motorized axes

¹ CMOSLine represents a system configuration that is based on a Ziehm Imaging CMOS flat-panel detector. ² Ziehm Vision RFD Hybrid Edition represents a group of optional hardware and software that creates an option package on the device named Ziehm Vision RFD. ³ 30kW generator is available in combination with dedicated cardio packages. ⁴ EndoSize[®] is a registered trademark of Therenva SAS. EndoSize[®] software obtained a substantial equivalence determination and FDA clearance through the CDRH premarket notification process [510(k)]. The information provided in the labelling and manual is intended for healthcare professionals only. Information provided by the EndoSize[®] Software is not intended to support or replace any medical decisions with respect to the patient's medical care. The sole and exclusive responsibility for determining the accuracy, completeness or appropriateness of any diagnostics, clinical or medical information provided by EndoSize[®] resides solely with the healthcare provider. For the safe and successful operation and use of the device, always read the instructions. ⁵ QMAPP[®] is a registered trademark of Fysicon B.V.. In the USA, the QMAPP[®] software obtained a substantial equivalence determination and FDA clearance through the CDRH premarket notification process [510(k)]. In Europe, the QMAPP[®] software is CE marked [class IIb]. The information provided in the labelling and manual is intended for Healthcare Professionals only. For the safe and successful operation and use of the device, always read the instructions. ⁶ The Usability Concept includes a variety of hard- and software features. Due to regulatory reasons the availability of each feature may vary. Please contact your local Ziehm Imaging sales representative for detailed information. ⁷ In clinical practice, the use of SmartDose may reduce patient dose depending on the clinical task, patient size, anatomical location, and clinical practice. A consultation with a radiologist and a physicist should be made to determine the appropriate dose to obtain diagnostic image quality for the particular clinical task.